

LAZY J2 Ranch Estate North 520 ac



Red Mountain - Saddle Mountain and Mount Wrightson on the horizon of J2 Ranch Estate North



Lazy J2 North is 520 acres of sweeping vistas and a 360 degree pristine panorama of stunning grassland.



Monsoon green and the valley looks like Ireland



Stunning Winter gold and blue

LAZY J2 Ranch Estate North 520 ac



Seasonal rain brings out the wildflowers



A haven for Hikers, Mountain Biking, Bird Watching, Photography, Artists of all mediums and clearly an equestrian dream.

Softly rolling native grasses sweep the landscape. The San Rafael is one of the last intact short grass prairies left in America.

It provides one of the last intact watersheds that feeds the headwaters of the Santa Cruz River.

Conservation easements protect these vistas in perpetuity while offering a 20ac building envelope in a mature grove of native oak trees.

Easements held by Arizona Land & Water Trust



LAZY J2 Ranch Estate North 520 ac

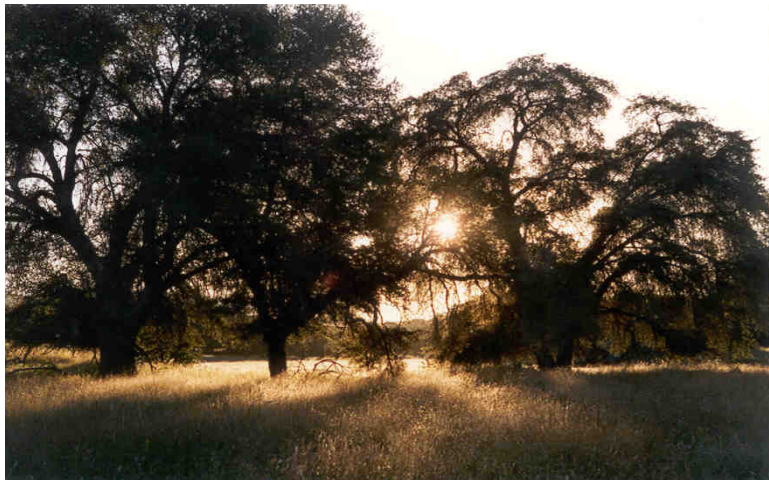
20 acre BUILDING SITE



Vista from the building envelope looking south



Cattle drive headed north toward the oak strewn building site



Native mature Oak Grove

20 acre building envelope amongst the oaks overlooks a meadow and Cherry Creek tributary. Seasonal rains will bring running water and is a momentary riparian habitat.

Stunning views of the rolling grasslands spread out on your doorstep and the magnificent vistas of the San Rafael Valley surround you. Building envelope is contiguous to USFS Coronado National Forest.



Looking east from Lazy J2 Ranch Estate North - 9000 ft Huachuca Mountains & Canelo Hills

